



412914600

EPSON®
EXCEED YOUR VISION

Useful Functions for Smart Devices

This printer provides useful functions for smart devices.

- Utility for iOS/Android™ provides a user-friendly wizard to simplify the connection for smart devices.
⇒ See **"1. Making Printer Settings from your Smart Device"**.
- NFC equipped printer unit for printing to a touched printer (*1).
- Printing triggered by bar code scan by smart device camera (*1).
⇒ See **"2. NFC Equipped Printer Unit (Short Range Wireless Technology) for Touch Printing"**.

1. Making Printer Settings from your Smart Device

An application (Epson TM Utility) is provided that allows you to make printer settings. You can setup wireless connection from your smart device directly without having to use cables or a computer. Epson TM Utility is an application that allows you to make a variety of settings and perform test printing from an iOS/Android device.

Setting Up a Wireless Connection Using the Wizard

The wizard provided allows you to easily connect to smart devices.

Prepare the following items.

- Device to be set up: iOS or Android device
- Utility used for set up: Epson TM Utility for iOS or Epson TM Utility for Android

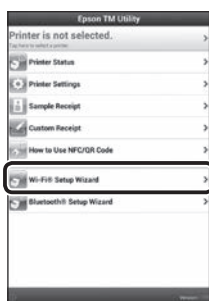


Note

You can download the Epson TM Utility from Google Play™ or the App Store.

When using a wireless LAN interface

1. Run the Epson TM Utility.
2. Select "Wi-Fi® Setup Wizard" from the menu.
3. See the Epson TM Utility on-screen guide to make settings and perform operations.



Setup and Operation Work flow

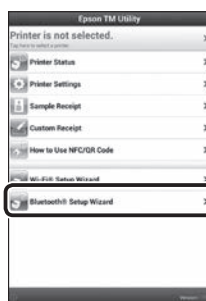
Select the network you want to connect to.

Enter the passkey.

Perform a test print.

When using a Bluetooth® interface

1. Run the Epson TM Utility.
2. Select "Bluetooth® Setup Wizard" from the menu.
3. See the Epson TM Utility on-screen guide to make settings and perform operations.



Setup and Operation Work flow

Select the printer you want to connect to.

Enter the passkey.

Perform a test print.

2. NFC Equipped Printer Unit (Short Range Wireless Technology) for Touch Printing(*1)

By using the NFC equipped printer unit, you can make connection settings and print by simply touching a smart device that supports NFC to your printer.

When using different combinations of multiple smart devices and printers, you need to select the printer you want to connect to from the smart device. However, when using NFC, you can simply touch your smart device to the printer to create an instant combination. Also, when multiple printers are installed, you can print a receipt by simply touching your smart device to the nearest printer.

NFC Tag

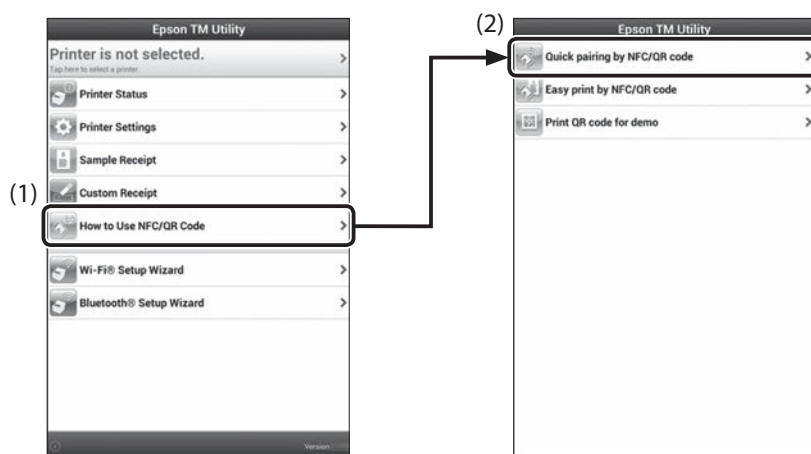
Models that have an NFC tag (symbol) support connecting to smart devices using the NFC function.

- There is no Read/Write function.



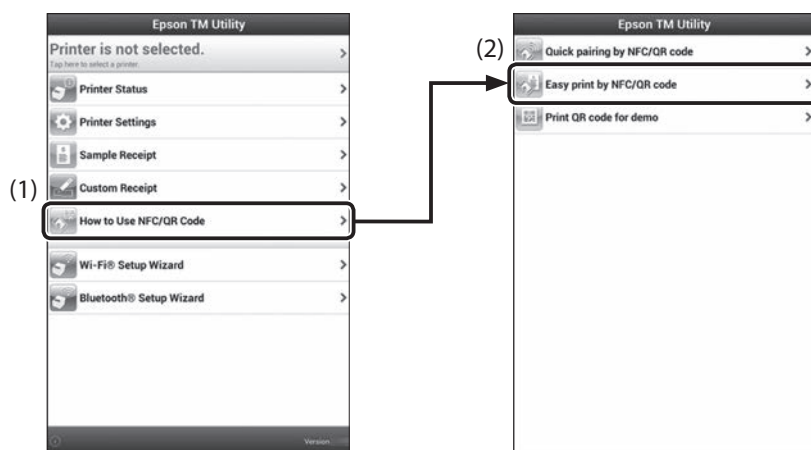
Quick pairing by NFC/QR code

Touch your device to the NFC tag on the printer, or capture the QR code with the camera on your smart device to select the printer. You can try a demo of this function in Epson TM Utility.



Easy print by NFC/QR Code

Touch your device to the NFC tag on the printer, or capture the QR code with the camera on your smart device to start printing. You can try a demo of this function in Epson TM Utility.



Note

Use ePOS-Print SDK to build this function into your application. This function is created by combining NFC touch and QR code capturing operations, the target printer specifications using Printer Easy Select API, and the print job. See the "ePOS-Print SDK for Android/iOS User's Manual" and the ePOS-Print SDK sample program for more details. The sample program also contains a sample implementation method for reading an NFC tag and capturing a QR code.

(*1) NFC equipped models only.

EPSON is a registered trademark of Seiko Epson Corporation.

Exceed Your Vision is a registered trademark or trademark of Seiko Epson Corporation.

Wi-Fi® is a registered trademark of Wi-Fi Alliance®.

The Bluetooth® word mark and logos are registered trademarks owned by Bluetooth SIG, Inc. and any use of such marks by Seiko Epson Corporation is under license.

IOS is a trademark or registered trademark of Cisco in the U.S. and other countries and is used under license.

Android and Google Play are trademarks of Google, Inc.

QR Code is a registered trademark of DENSO WAVE INCORPORATED in Japan and in other countries.

All other trademarks are the property of their respective owners and used for identification purpose only.